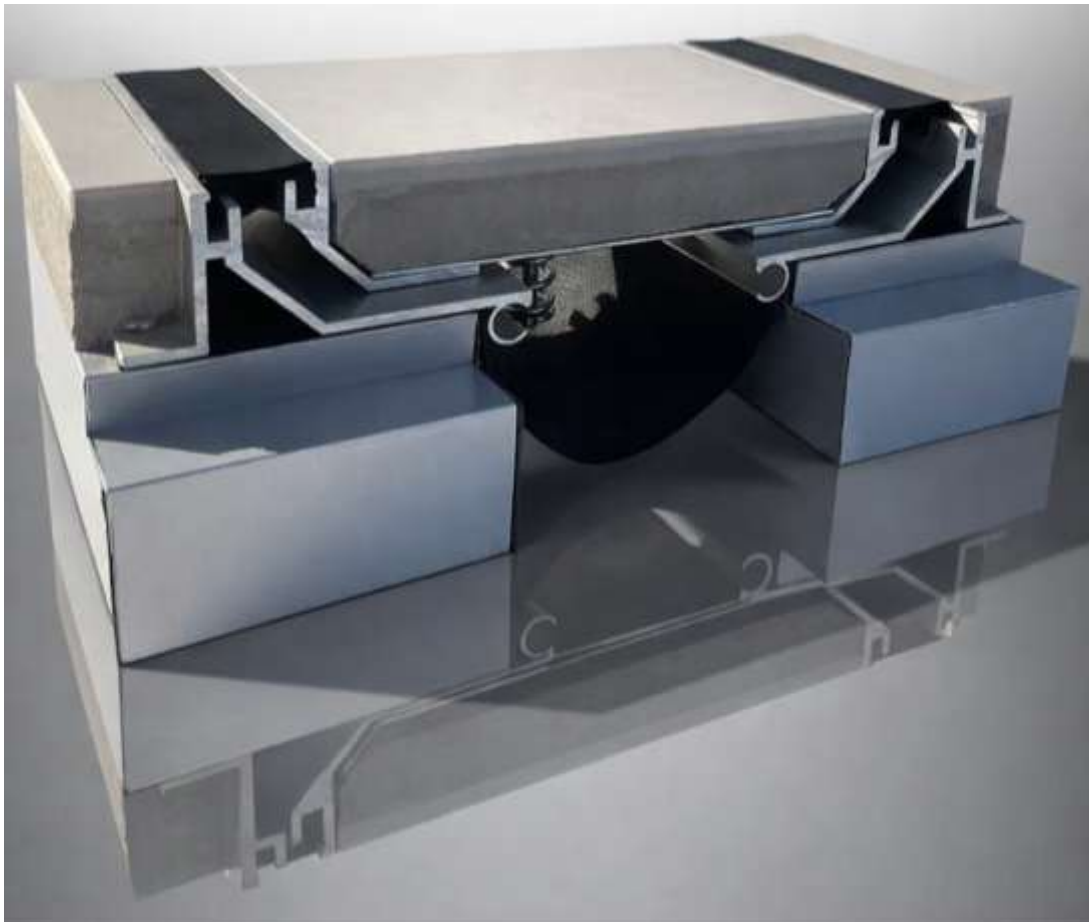


## Joint-K PED-DSZJ

Seismic floor expansion joint with integrated pan for wide range of floor coverings

---



### Description

**Joint-K PED-DSZJ** is an expansion joint specially designed for pedestrian traffic in joints that require a flush design allowing free tripping traffic.

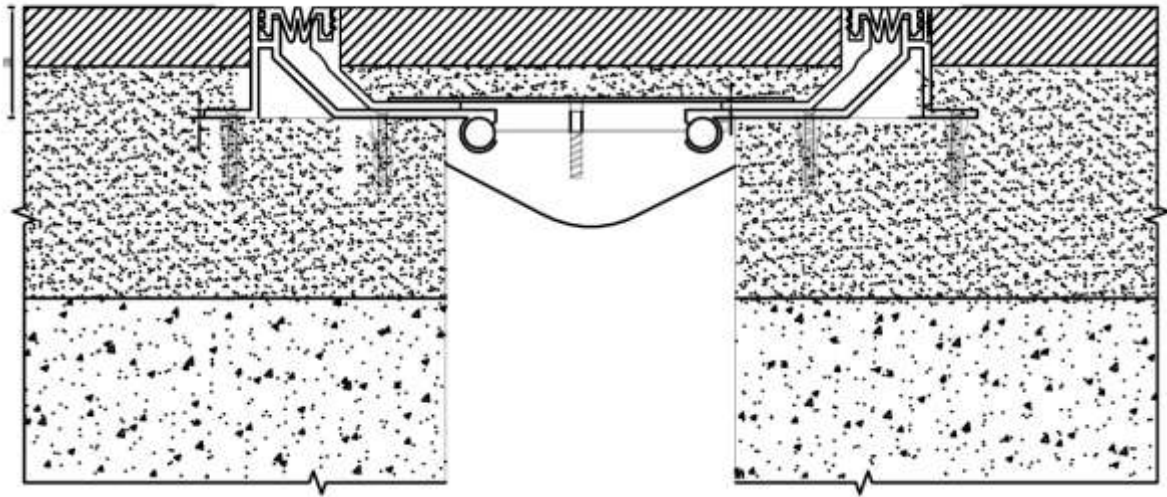
Can withstand multidirectional seismic movement, staying flush all the way, while providing an almost seamless aesthetic, since only the lateral seals are visible, while other joints provide a wide plate that feels bulky.

### Uses

- Airports
- Hospitals
- Shopping malls
- Schools
- Bus or train terminals
- Office buildings

### Features

- Aesthetically pleasing
- Water barrier included.
- Ideal for thick floor coverings (natural stone, pavers, etc.)



**Dimension and movement table**

Joint Width (W)		75	100	125	150	175	200	250	300	350	400	450	500
Exposed surface (ES)		215	240	265	290	315	340	390	440	490	540	590	640
Movement Capacity	Total	50	50	50	50	50	50	50	50	50	50	50	50
	+	25	25	25	25	25	25	25	25	25	25	25	25
	-	25	25	25	25	25	25	25	25	25	25	25	25

## Notes

1. Make sure expected movements of the structure do not exceed the limits listed in the table above.
2. Verify that the dimensions of the slab spacing is uniform.
3. Make sure you have the same level on both sides of the joint.
4. The concrete of the slabs must be at least 28 days old.