

Wabo®SeismicFloor

Interior Floor Seismic Expansion Control System

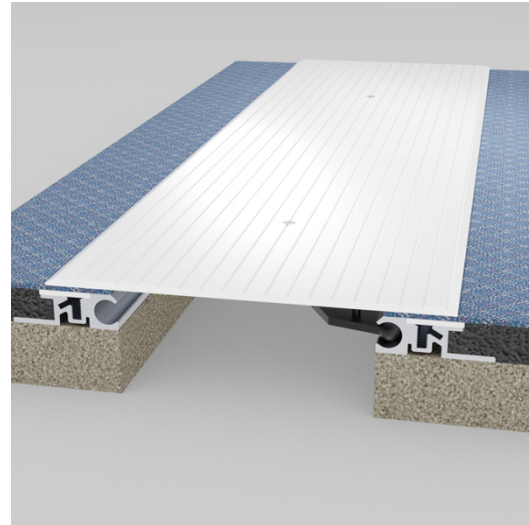
Features	Benefits
• Durable and time tested	Limited maintenance.
• Pedestrian friendly	Complies with ADA requirements.
• Versatile	System adjustable to site conditions and various floor finishes.
• Multi-directional movement	Protects structure and building occupants during earthquake activity.

DESCRIPTION:

Wabo®SeismicFloor Covers are capable of accommodating thermal and multi-directional seismic movement. The product is comprised of 6 different models. Each model has been designed for a variety of construction conditions. All models have been designed to meet ADA design criteria.

Model “FXB” has been designed for new to existing structures and utilizes an aluminum cover plate. Model “FJX” has been designed for new construction and utilizes a stainless steel cover plate, brass is also available. Model “FXE” has been designed for existing structures, utilizes an aluminum cover plate, and includes a moisture barrier to prevent water infiltration to lower levels. Model “FJG” has been designed for new construction and utilizes a recessed aluminum cover plate. Model “FJC” has been designed for new construction and utilizes a flush mounted aluminum cover plate.

Model “FNB” has been designed for new construction and utilizes a recessed no bump aluminum coverplate.



RECOMMENDED FOR:

- All Interior floor expansion joint applications.
- For use in various construction projects including:
 - Health-Care
 - Transportation
 - Recreation
 - Retail
 - Commercial
 - Educational
 - Parking Garage (interior areas)

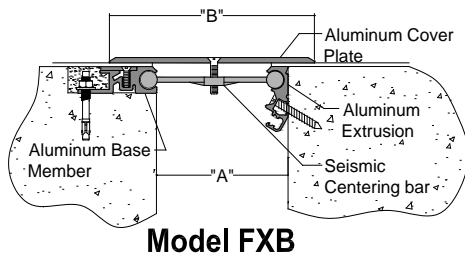
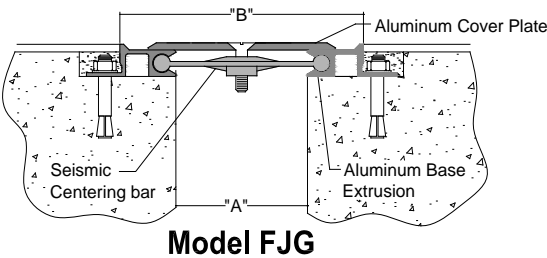
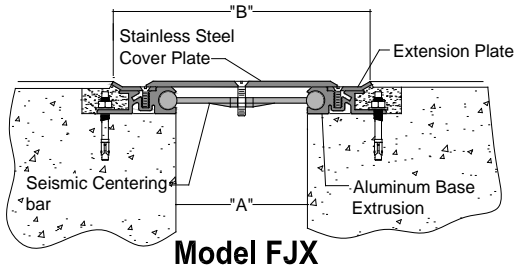
PACKAGING/COVERAGE:

- Metal profiles shipped in 10 ft. lengths
- Moisture barrier shipped in continuous lengths
- All material and components palletized and/or packaged in manufacturer's standard labeled carton.



We create chemistry

TECHNICAL DATA:



Note: See product sales drawings for additional details

Movement Tables

MODEL NUMBER	JOINT OPENING ("A")		SYSTEM WIDTH ("B")		TOTAL MOVEMENT	
	inches	mm	inches	mm	inches	mm
FJX-200	2.0	51	6.25	159	2.0	51
FJX-400	4.0	102	10.38	264	5.0	127
FJX-600	6.0	152	13.75	349	8.0	203
FJX-800	8.0	203	15.75	400	11.0	279
FJX-1000	10.0	254	18.75	476	14.0	356
FJX-1200	12.0	305	21.75	552	17.0	432
FJX-1800	18.0	457	31.75	806	26.0	660
FJX-2400	24.0	610	40.75	1035	35.0	889
FJX-200C	2.0	51	3.88	98	1.5	38
FJX-400C	4.0	102	7.19	183	4.0	102
FJX-600C	6.0	152	9.88	251	6.5	165
FJX-800C	8.0	203	11.88	302	9.0	229
FJX-1000C	10.0	254	14.38	365	11.5	292
FJX-1200C	12.0	305	16.88	429	14.0	356
FJX-1800C	18.0	457	24.88	632	21.5	546
FJX-2400C	24.0	610	32.38	822	29.0	737

MODEL NUMBER	JOINT OPENING ("A")		SYSTEM WIDTH ("B")		TOTAL MOVEMENT	
	inches	mm	inches	mm	inches	mm
FJG-200	2.0	51	5.75	146	2.0	51
FJG-400	4.0	102	10.38	264	5.0	127
FJG-600	6.0	152	13.75	349	8.0	203
FJG-800	8.0	203	15.75	400	11.0	279
FJG-1000	10.0	254	18.75	476	14.0	356
FJG-1200	12.0	305	21.75	552	17.0	432
FJG-1800	18.0	457	31.75	806	26.0	660
FJG-2400	24.0	610	40.75	1035	35.0	889
FJG-200C	2.0	51	3.88	98	1.5	38
FJG-400C	4.0	102	7.19	183	4.0	102
FJG-600C	6.0	152	9.88	251	6.5	165
FJG-800C	8.0	203	11.88	302	9.0	229
FJG-1000C	10.0	254	14.38	365	11.5	292
FJG-1200C	12.0	305	16.88	429	14.0	356
FJG-1800C	18.0	457	24.88	632	21.5	546
FJG-2400C	24.0	610	32.38	822	29.0	737

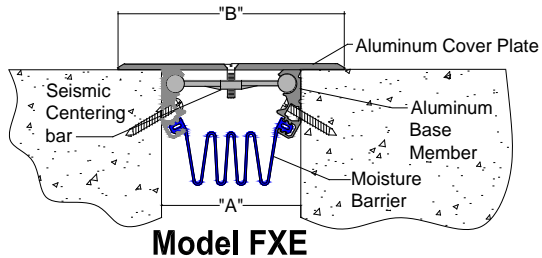
MODEL NUMBER	JOINT OPENING ("A")		SYSTEM WIDTH ("B")		TOTAL MOVEMENT	
	inches	mm	inches	mm	inches	mm
FXB-400	4.0	102	6.5	165	5.0	127
FXB-600	6.0	152	9.5	241	8.0	203
FXB-800	8.0	203	12.5	318	11.0	279
FXB-1000	10.0	254	15.5	394	14.0	356
FXB-1200	12.0	305	18.5	470	17.0	432
FXB-1800	18.0	457	27.5	699	26.0	660

Watson Bowman Acme Corp.
95 Pineview Drive
Amherst, NY 14228
phone: 716-691-7566
fax: 716-691-9239
wbacorp.com

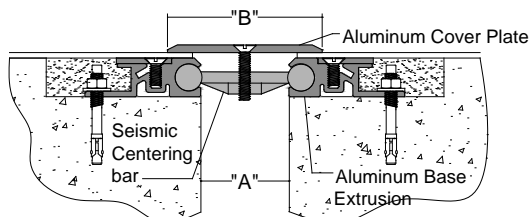




We create chemistry



Model FXE

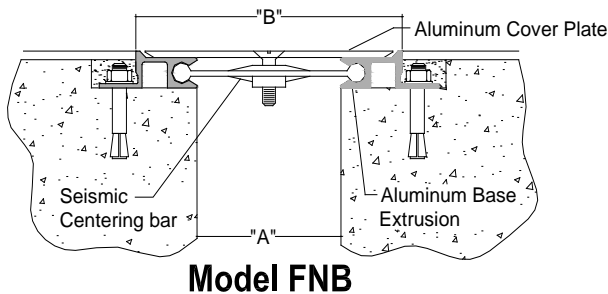


Model FJC

Movement Table

MODEL NUMBER	JOINT OPENING ("A")		SYSTEM WIDTH ("B")		TOTAL MOVEMENT	
	inches	mm	inches	mm	inches	mm
FXE-400	4.0	102	6.5	165	4.0	102
FXE-600	6.0	152	9.5	241	7.0	178
FXE-800	8.0	203	12.5	318	10.0	254
FXE-1000	10.0	254	15.5	394	13.0	330
FXE-1200	12.0	305	18.5	470	16.0	406
FXE-1800	18.0	457	27.5	699	25.0	635

MODEL NUMBER	JOINT OPENING ("A")		SYSTEM WIDTH ("B")		TOTAL MOVEMENT	
	inches	mm	inches	mm	inches	mm
FJC-200	2.0	51	3.50	89	2.0	51
FJC-400	4.0	102	6.50	165	5.0	127
FJC-600	6.0	152	9.50	241	8.0	203
FJC-800	8.0	203	12.50	318	11.0	279
FJC-1000	10.0	254	15.50	394	14.0	356
FJC-1200	12.0	305	18.50	470	17.0	432
FJC-1800	18.0	457	27.50	699	26.0	660
FJC-2400	24.0	610	36.50	927	35.0	889
FJC-200C	2.0	51	2.75	70	1.5	38
FJC-400C	4.0	102	5.25	133	4.0	102
FJC-600C	6.0	152	7.75	197	6.5	165
FJC-800C	8.0	203	10.25	260	9.0	229
FJC-1000C	10.0	254	12.75	324	11.5	292
FJC-1200C	12.0	305	15.25	387	14.0	356
FJC-1800C	18.0	457	22.75	578	21.5	546
FJC-2400C	24.0	610	30.25	768	29.0	737



MODEL NUMBER	JOINT OPENING		SYSTEM WIDTH ("B")		TOTAL MOVEMENT	
	inches	mm	inches	mm	inches	mm
FNB-200	2.0	51	5.75	146	2.0	51
FNB-300	3.0	76	7.75	197	4.0	102
FNB-400	4.0	102	7.75	197	5.0	127
FNB-500	5.0	127	11.75	299	8.0	203
FNB-600	6.0	152	11.75	299	8.0	203
FNB-800	8.0	203	15.19	386	11.0	279
FNB-1000	10.0	254	17.81	452	14.0	356
FNB-1200	12.0	305	20.81	529	17.0	432
FNB-1800	18.0	457	30.19	767	26.0	660
FNB-2400	24.0	610	37.19	945	34.5	876
FNB-200C	2.0	51	3.88	98	3.0	76
FNB-300C	3.0	76	5.38	137	4.0	102
FNB-400C	4.0	102	5.88	149	5.0	127
FNB-500C	5.0	127	8.38	213	7.0	178
FNB-600C	6.0	152	8.88	225	8.0	203
FNB-800C	8.0	203	13.06	332	10.8	273
FNB-1000C	10.0	254	13.94	354	12.8	324
FNB-1200C	12.0	305	16.42	417	15.4	390
FNB-1800C	18.0	457	24.09	612	23.0	584
FNB-2400C	24.0	610	30.59	777	29.3	743

PHYSICAL PROPERTIES:

Aluminum Extrusions and Shapes: Materials shall conform to properties of ASTM B221, Aluminum alloy 6063-T6.

Stainless Steel: Material shall conform to properties of ASTM 5A 240 or ASTM A276 Type 304.

Brass: Material shall conform to properties of CDA260, 70% copper.

Self-Centering Bar: Manufactured incorporating corrosion resistant nylon components with spherical ends.

Moisture Barrier: Fabric reinforced tear resistant clear vinyl sheet material. Minimum thickness shall be 0.026".

APPLICATION:**INSTALLATION SUMMARY:**

- Protect all expansion joint components from damage during installation and protect finished installation from damage from other trades during all work activities.
- Expansion joint systems shall be installed in accordance with manufacturer's typical details and installation procedures.
- Floor construction and materials shall be designed to allow for proper installation of system and its components. Construct all blockouts in accordance with manufacturer's recommendations.
- Construct joint openings consistent in width and straight along joint length. Inspect and verify all substrates to be solid and sound prior to work. Remove any loose materials and repair any voids, and/or spalls with appropriate repair material.
- Construct all adjacent floors to be horizontally flat along length and flush across both sides of the opening. Inspect and verify all substrates to be solid and sound prior to work.
- Install appropriate fire barrier system, if required by building code and rated construction. Contact WBA for recommendations on appropriate fire barrier system.
- Metal components shall be cut to length on job site where required. Components shall be miter cut in the field to conform to directional changes unless otherwise contracted with expansion joint manufacturer.
- All anchor holes shall be field drilled in accordance with manufacture's drawings.

FOR BEST RESULTS:

- Do not install if the joint's anticipated movement will exceed the system's movement range.
- Deliver product in each manufacturer's original, intact, labeled containers. Protect the work area with appropriate plastic sheeting.
- Do not allow any of the components to freeze prior to installation. Store all components out of direct sunlight in a clean, dry location between 50°F (10°C) and 90°F (32°C). Store off the ground and protect from weather and construction activities.
- Do not use for external locations, which require watertight expansion joint system. Contact WBA for recommendations.
- Periodically inspect the installed material and repair localized areas as needed. Inspect for loose components and/or hardware, repair as necessary. Consult a Watson Bowman Acme representative for additional information.
- Make certain the most current version of the product data sheet is being used. Please consult the website (www.wbacorp.com) or contact a customer service representative.
- Proper application is the responsibility of the user. Field visits by Watson Bowman Acme personnel are for the purpose of making technical recommendations only and not for supervising or providing quality control on the jobsite.

RELATED DOCUMENTS:

- Material Safety Data Sheets
- WaboSeismicFloor Specification
- WaboSeismicFloor CAD Drawings
- WaboSeismicFloor Installation Procedure



We create chemistry

LIMITED WARRANTY:

Watson Bowman Acme Corp. warrants that this product conforms to its current applicable specifications. WATSON BOWMAN ACME CORP. MAKES NO OTHER WARRANTY, EXPRESS OR IMPLIED, INCLUDING ANY WARRANTY OF MERCHANTABILITY OR WARRANTY OF FITNESS FOR A PARTICULAR PURPOSE. The sole and exclusive remedy of Purchaser for any claim concerning this product, including, but not limited to, claims alleging breach of warranty, negligence, strict liability or otherwise, is the replacement of product or refund of the purchase price, at the sole option of Watson Bowman Acme Corp. Any claims concerning this product shall be submitted in writing within one year of the delivery date of this product to Purchaser and any claims not presented within that period are waived by Purchaser. IN NO EVENT SHALL WATSON BOWMAN ACME CORP. BE LIABLE FOR ANY SPECIAL, INCIDENTAL, CONSEQUENTIAL (INCLUDES LOSS OF PROFITS) OR PUNITIVE DAMAGES. Other warranties may be available when the product is installed by a factory trained installer. Contact your local Watson Bowman Acme representative for details. The data expressed herein is true and accurate to the best of our knowledge at the time published; it is, however, subject to change without notice.

WaboSeismicFloor_0217

Watson Bowman Acme Corp.
95 Pineview Drive
Amherst, NY 14228
phone: 716-691-7566
fax: 716-691-9239
wbacorp.com

