

**Watson  
Bowman  
Acme**

# Bridge Maintenance and Preservation

**Your Strongest Partner for  
Expansion Control Systems**

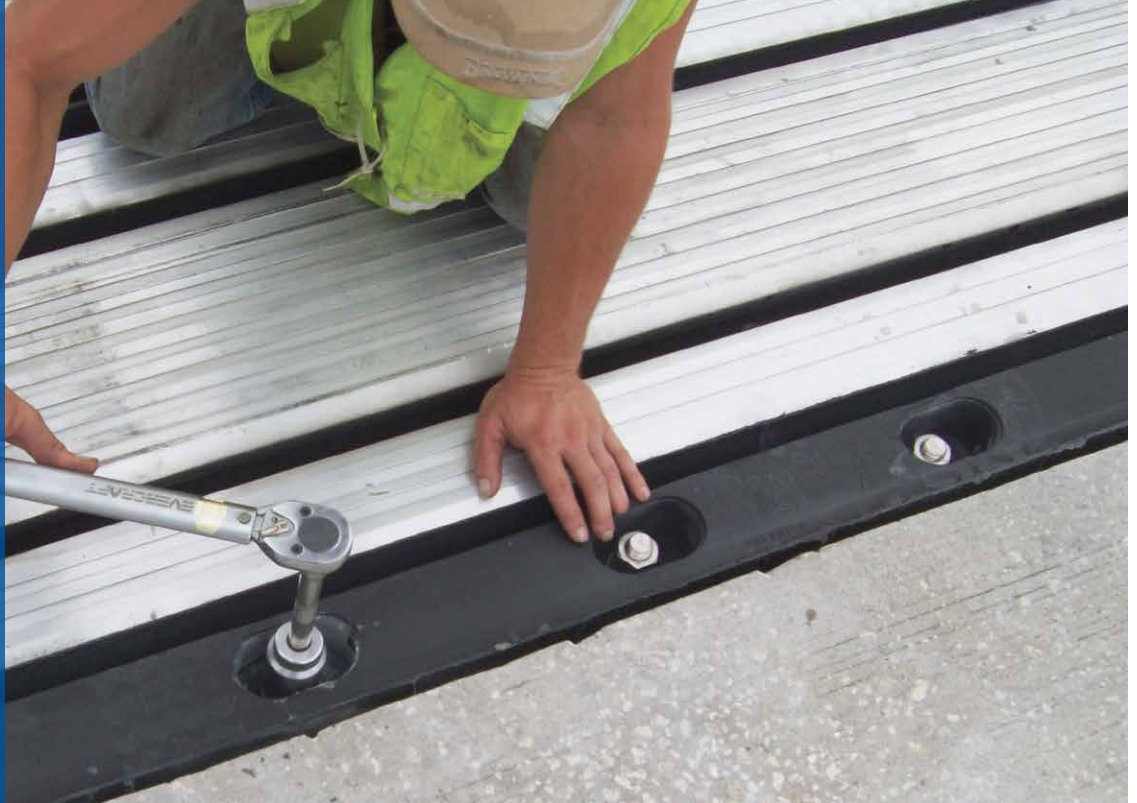
 **BASF**  
We create chemistry



# What we bring to your project

Dedication, quality, and world-class results—on time and on budget.

World-class  
expansion  
control  
systems for  
world-class  
projects



## Full project support

As your strongest partner, not only will Watson Bowman Acme provide you with customized expansion control system solutions, we will also support your business throughout each phase of your project.



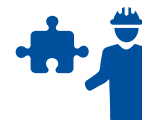
### Lead Generation

Local sales support backed by corporate research teams to find the best-fit projects.



### Engineering Support

Customized concepts, designs, and drawings for project-based solutions.



### Technical Services

Field training and on-site technical assistance readily available.



### Estimating

Commitment to highly accurate quotations, quick turn-arounds and quicker takeoffs.



### Order Management

Delivery/freight options that fit your specific business needs.

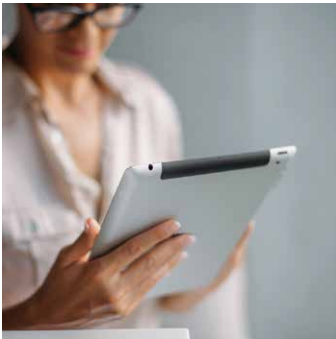
# Being the industry leader means something

Commitment to quality, service, and reliability. It's about committing to innovation, setting the industry standard, and providing you with world-class solutions.



## Technical Expertise

No project or unique design requirement is too difficult for the Watson Bowman Acme team of experts. Our Field Service Technicians are readily available to assist you on-site with any needs you may have.



## Innovation

Watson Bowman Acme has designed and manufactured systems for the world's most complex projects. With access to BASF's state-of-the-art research and development resources, innovation continues to be critical to our success. And yours.



## Custom Solutions

We understand that there is not one joint system that will fit every application, so we work as a team to find you the most effective products, and deliver them fast, with minimal costs.



## Quality

You can't have quality without commitment to continuous improvement. Combined with a dedication to providing only the highest quality products and services, a recent \$2 million+ investment in process and equipment improvements, an ISO 9001:2008 certification, all supported by Lean Six Sigma tools and methodology, we keep manufacturing lean and get you top results—on time and on budget.

Expansion joints are a critical link to the sustainability of a bridge structure. The effects of failing expansion joints or improper system selection will severely weaken the structural integrity of a bridge. Watson Bowman Acme continues to improve and enhance the performance, preservation and installation of bridge expansion joints.

# Partnership, support, and deep expertise

Watson Bowman Acme, a BASF Construction Chemicals business, is at the industry forefront of the preservation and maintenance of expansion control systems.



Watson Bowman Acme provides technical support and product solutions for the most complex and challenging applications, with deep expertise across all industries.



## Expansion joints operate in unique environments, and are a critical link to the sustainability of a bridge's structure.

Structural damage caused by increased loading, traffic congestion, chemical exposure, effects of salt water and the high cost of repairs has increased the demand for better new construction and rehabilitative techniques and improved system design.

Let the experts at Watson Bowman Acme provide long-term, custom-engineered solutions for your most challenging projects.





# Watson Bowman Acme Expansion Control Solutions for bridges and highways:

## Armorless Technology:



**Wabo®Crete SiliconeSeal**  
Self-leveling high performance system



**Wabo®Expandex**  
Asphaltic plug joint system



**Wabo®Crete FlexFoam**  
Non-metallic system for quick joint repairs



**Wabo®Crete SPS**  
Fast-setting system that handles varying joint widths

## Segmental Technology:



**Wabo®ElastoFlex**  
Continuous membrane sealing system



**Wabo®Flex**  
Molded rubber system embedded with wear plates



**Wabo®TransFlex**  
Reinforced rubber cushion joint system



**Wabo®SafetyFlex**  
ADA Compliant, rubber encapsulated, steel cover plate



**Wabo®GutterFlex**  
Fabric reinforced gutter and drain tube assembly

## Joint Seal Technology:



**Jeene®**  
Multi-directional structural sealing system



**Wabo®Compression Seal**  
Preformed neoprene bridge seal



**Wabo®Evazote**  
Closed-cell nitrogen blown foam seal



**Wabo®XPE**  
Preformed impermeable UV stable foam seal



**Wabo®InverSeal**  
Preformed closed-cell neoprene foam seal



**Wabo®PavementSeal**  
Preformed neoprene seal



**Wabo®FS Bridge Seal**  
Pre-compressed foam supported silicone



**Wabo®SPS**  
Preformed silicone seal system

## Header and Spall Repair and more:



**Wabo®Crete II**  
Elastomeric concrete header



**Wabo®SurfaceMend**  
Polymer concrete header



**Wabo®ElastoPatch**  
Elastomeric concrete spall repair



**Wabo®HPH**  
Viscoelastic high-performance header



For more products, accessories and the latest information, visit [wbacorp.com](http://wbacorp.com) or request a product catalog from your WBA sales representative.





Watson Bowman Acme Corp.

95 Pineview Drive Amherst, NY 14228

Tel. 716-691-7566 Fax 716-691-9239

[wbacorp.com](http://wbacorp.com)